

CORRECTION

Open Access



# Correction: Clinical spectrum and prognostic impact of cancer in critically ill patients with HIV: a multicentre cohort study

Piotr Szychowiak<sup>1</sup>, Thierry Boulain<sup>1</sup>, Jean-François Timsit<sup>2</sup>, Alexandre Elabbadi<sup>3</sup>, Laurent Argaud<sup>4</sup>, Stephan Ehrmann<sup>5</sup>, Nahema Issa<sup>6</sup>, Emmanuel Canet<sup>7</sup>, Frédéric Martino<sup>8</sup>, Fabrice Bruneel<sup>9</sup>, Jean-Pierre Quenot<sup>10</sup>, Florent Wallet<sup>11</sup>, Élie Azoulay<sup>12</sup> and François Barbier<sup>1\*</sup>

**Correction:** *Annals of Intensive Care* (2023) 13:74  
<https://doi.org/10.1186/s13613-023-01171-4>

In the original publication of the article, the authors found the below errors.

The fourth author name Alexandre Elabbadi was incorrectly written as Alexandre Elabaddi.

The legend inside the Fig. 2 is reversed between the NADC and ADC groups. The corrected Fig. 2 is given in this correction article.

The original article [1] has been corrected.

Published online: 14 February 2024

The original article can be found online at <https://doi.org/10.1186/s13613-023-01171-4>.

\*Correspondence:

François Barbier  
francois.barbier@chr-orleans.fr

<sup>1</sup> Médecine Intensive Réanimation, Centre Hospitalier Régional d'Orléans, 14, Avenue de L'Hôpital, 45100 Orléans, France

<sup>2</sup> Réanimation Médicale et des Maladies Infectieuses, Centre Hospitalier Universitaire Bichat-Claude Bernard, Assistance Publique-Hôpitaux de Paris, Paris, France

<sup>3</sup> Médecine Intensive Réanimation, Centre Hospitalier Universitaire Tenon, Assistance Publique-Hôpitaux de Paris, Paris, France

<sup>4</sup> Médecine Intensive Réanimation, Centre Hospitalier Universitaire Edouard Herriot, Hospices Civils de Lyon, Lyon, France

<sup>5</sup> Médecine Intensive Réanimation, Centre Hospitalier Universitaire de Tours, Tours, France

<sup>6</sup> Médecine Intensive Réanimation, Centre Hospitalier Universitaire de Bordeaux, Bordeaux, France

<sup>7</sup> Médecine Intensive Réanimation, Centre Hospitalier Universitaire de Nantes, Nantes, France

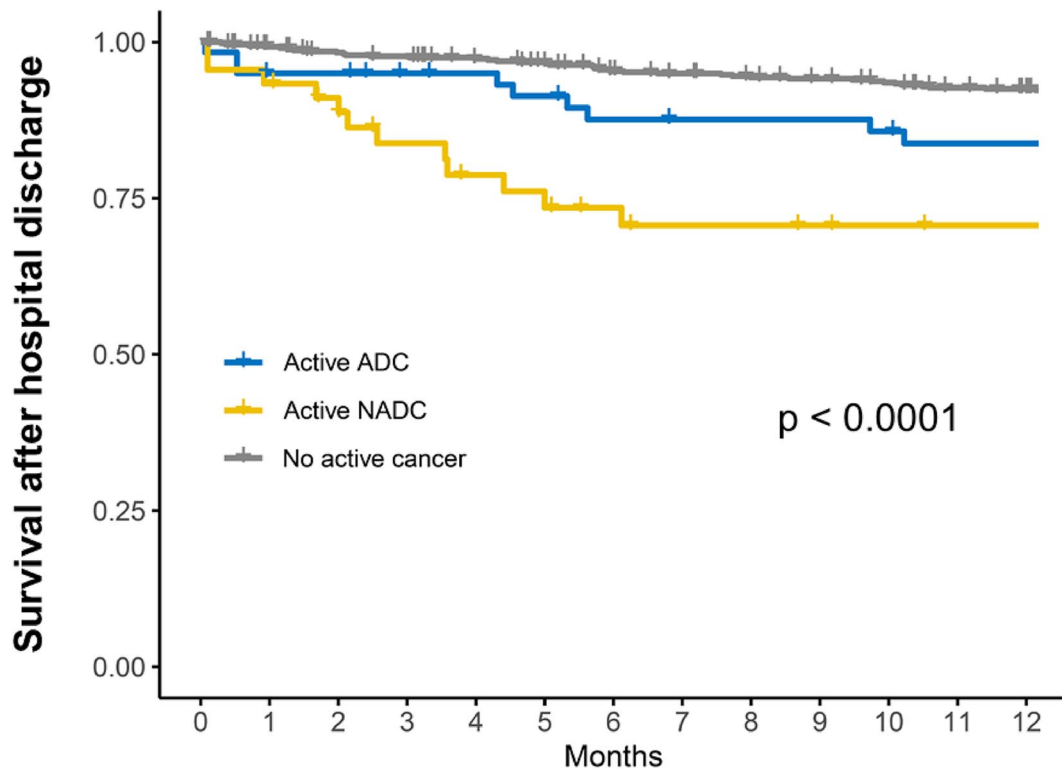
<sup>8</sup> Médecine Intensive Réanimation, Centre Hospitalier Universitaire de La Guadeloupe, Pointe-à-Pitre, France

<sup>9</sup> Réanimation et Unité de Surveillance Continue, Centre Hospitalier de Versailles, Le Chesnay, France

<sup>10</sup> Médecine Intensive Réanimation, Centre Hospitalier Universitaire de Dijon-Bourgogne, Dijon, France

<sup>11</sup> Médecine Intensive Réanimation, Centre Hospitalier Universitaire Lyon Sud, Hospices Civils de Lyon, Lyon, France

<sup>12</sup> Médecine Intensive Réanimation, Centre Hospitalier Universitaire Saint-Louis, Assistance Publique-Hôpitaux de Paris, Paris, France



**Fig. 2** Cumulative survival at one-year according to the cancer status in patients discharged alive from the index hospital admission. Kaplan–Meier curves (with right-censoring at the date of last follow-up information) were compared using the log-rank test. ADC, AIDS-defining cancer; NADC, non-AIDS-defining cancer

#### Reference

1. Szychowiak P, Boulain T, Timsit J-F, Elabaddi A, Argaud L, Ehrmann S, Issa N, Canet E, Martino F, Bruneel F, Quenot J-P, Wallet F, Azoulay F, Barbier F. Clinical spectrum and prognostic impact of cancer in critically ill patients with HIV: a multicentre cohort study. *Ann Intensive Care*. 2023;13:74. <https://doi.org/10.1186/s13613-023-01171-4>.

#### Publisher's Note

Springer Nature remains neutral with regard to jurisdictional claims in published maps and institutional affiliations.